

Rhombus

Andrea Weinrick

I'm addicted to sock yarn. I simply can't get enough. I know there are others like me, that horde sock yarn in mass quantities. My stash is so big, that I could literally knit one pair of socks a month for two years, and still not put a dent in what I own (gasp!).

I've recently noticed that subtle solids are "in" right now – well, at least in the hand dyed yarn arena. I think that subtle solids and kettle dyed semi-solids are a great way to showcase fun sock patterns. You can take an intricate pattern, and highlight it by using a beautifully subtle solid yarn.

This pattern is deceptively simple. If you can knit or purl, you can do this pattern. And its perfect for any subtle solid or solid yarn.

Materials Needed

1 skein Zen String Serendipity Fingering (100% African Superwash Merino; 375 yd/343 m per 113 g skein); color: Poseidon (or similar fingering weight yarn)

1 set US #2/2.75mm double-point needles

Tapestry Needle

Gauge

32 sts and 44 rows = 4 inches [10cm] in stockinette

Finished Measurements

Foot Circumference: 8 ½ inches
Length: To fit (sock shown measures 7 inches)



Pattern Notes

Pattern is worked over 61 sts. You will need to decrease the first stitch of the pattern by k2tog on the first stitch *only*.

To help keep track of your position, I highly recommend using a sticky note to keep track of your place in the pattern.

The directions shown here will create a basic box toe. To create anatomically correct sock toes as shown in the photos, please visit <http://persnicketyknitter.blogspot.com/2006/02/anatomically-correct-sock-toes.html>

PATTERN

Cuff

Loosely CO 62 sts.

Divide between 4 needles and join to begin first rnd.

Work [K1, P1] for 12 rnds or until work measures 1 inch [2.5 cm] .

Leg

Pattern is worked over 61 sts.

K2tog the first stitch of the next rnd.

This is stitch number 1 of the pattern.

Begin pattern work from **Leg Chart**

starting with stitch number 2.

Work in pattern until piece measures approx. 7 inches [17.8 cm] or two full repeats (72 rnds).

Heel Flap

Worked over 31 sts.

Redistribute sts as follows:

Needle 1-3: 15 sts

Needle 4: 16 sts

K 15 sts

Combine sts on needles 1 & 4 onto one needle.

Row 1 [WS]: sl 1, p to end, turn

Row 2 [RS]: sl 1, k to end, turn

Repeat these 2 rows 19 more times (21 rows total).

End with p row.

Turn Heel

Row 1 [RS]: k18, ssk, k1, turn.

Row 2 [WS]: sl 1, p6, p2tog, p1, turn.

Row 3 [RS]: sl 1, k7, ssk, k1, turn.

Row 4 [WS]: sl 1, p8, p2tog, p1, turn.

Row 5 [RS]: sl 1, k9, ssk, k1, turn.

Row 6 [WS]: sl 1, p10, p2tog, p1, turn.

Row 7 [RS]: sl 1, k11, ssk, k1, turn.

Row 8 [WS]: sl 1, p12, p2tog, p1, turn.

Row 9 [RS]: sl 1, k13, ssk, k1, turn.

Row 10 [WS]: sl 1, p14, p2tog, p1, turn.

Row 11 [RS]: sl 1, k15, ssk, k1, turn.

Row 12 [WS]: sl 1, p16, p2tog, p1, turn.
(19 heel sts)

Gusset

K 19 sts

Needle 1: Pick up and k 14 sts

Needle 2 & 3: Work top of sock in pattern from **Foot Chart**.

Needle 4: Pick up and k 14 sts (77 sts total)

To prevent holes, make sure you pick up one stitch between the gusset and the top of sock on both sides.

© 2008 Blue Goose Designs, LLC ♦ All rights reserved.
www.bluegoosedesigns.net

Round 1:

Needle 1: k to last 3 sts, k2tog, k1

Needles 2 & 3: pattern sts

Needle 4: k1, ssk, k to end

Round 2:

Needles 1 & 4: k all sts

Needles 2 & 3: pattern sts

Repeat these 2 rnds until 61 sts remain

Foot

Continue working k sts (needles 1 & 4) and pattern sts (needles 2 & 3) until sock measures 1.5 [3.8 cm] inches less than foot length.

Toe

Round 1:

Needle 1: k to last 3 sts, k2tog, k1

Needle 2: k1, ssk, k to end.

Needle 3: k to last 3 sts, k2tog, k1

Needle 4: k1, ssk, k to end.

Round 2: k all sts

Repeat these 2 rnds until 21 sts remain.

On the last repeat, k last 2 sts together.
(20 sts)

Combine sts from needles 1 & 4 onto one needle and sts from needles 2 & 3 onto one needle.

Graft together sts from two remaining needles.

Finishing

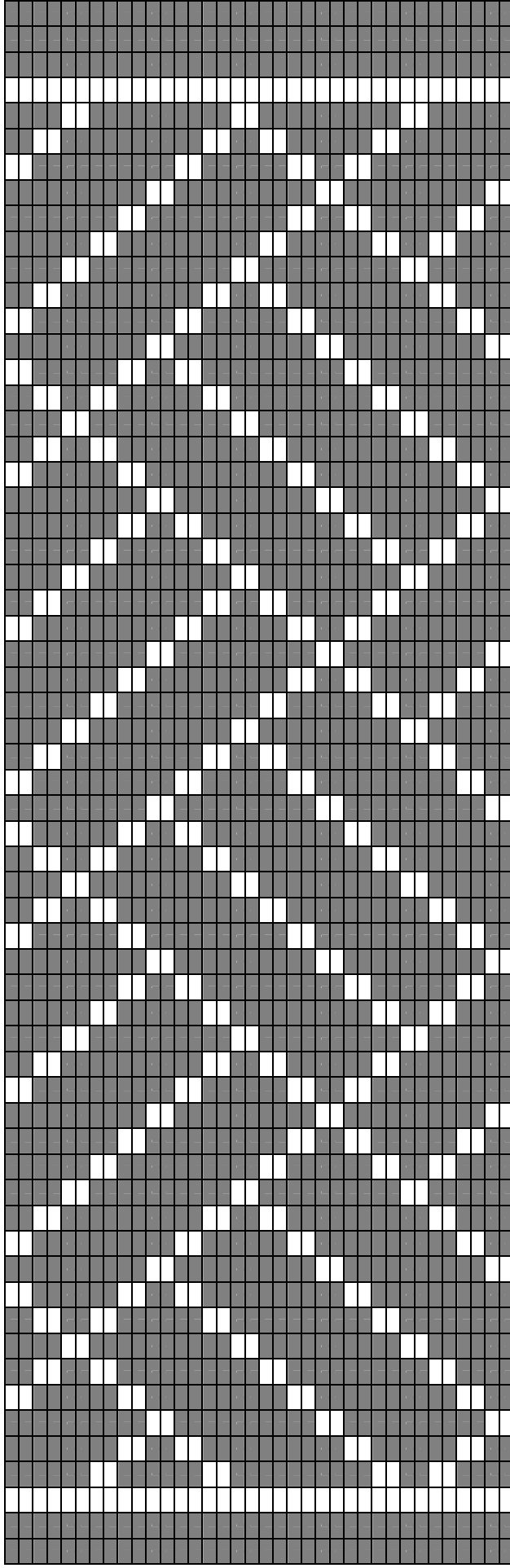
Weave in all ends and block.

This pattern is for personal use only. Reproduction or distribution of this pattern in any manner without expressed written permission is strictly prohibited. If you'd like to use this pattern for charity, personal sales, or redistribution, please contact me at bluegooseknitter@gmail.com

Schematics



Leg Chart



Foot Chart

